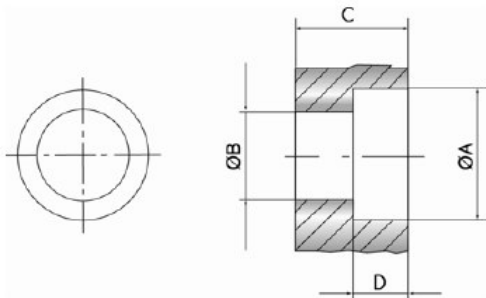


Mounting attention

On customers request we are manufacturing the countersinks for flange mounted chucks as follows:



SIZE	ϕA	ϕB	C	D
FLO/W 28	18	11	15	7
FLO/W 35	20	13	16	8
FLO/W 50	26	18	22	10.5

● Assembly instruction

In order to protect your chucks against increased wear it is necessary to have a perfect alignment of the chucks. Any misalliance of the unit cuts down on the life of your shaft and safety chuck. The factory cannot provide any warranty if the chucks are not mounted as we recommend.

